

Figura 1: Tracciato su ZSC IT5210039 "Fiume Timia tra Bevagna e Cannara"



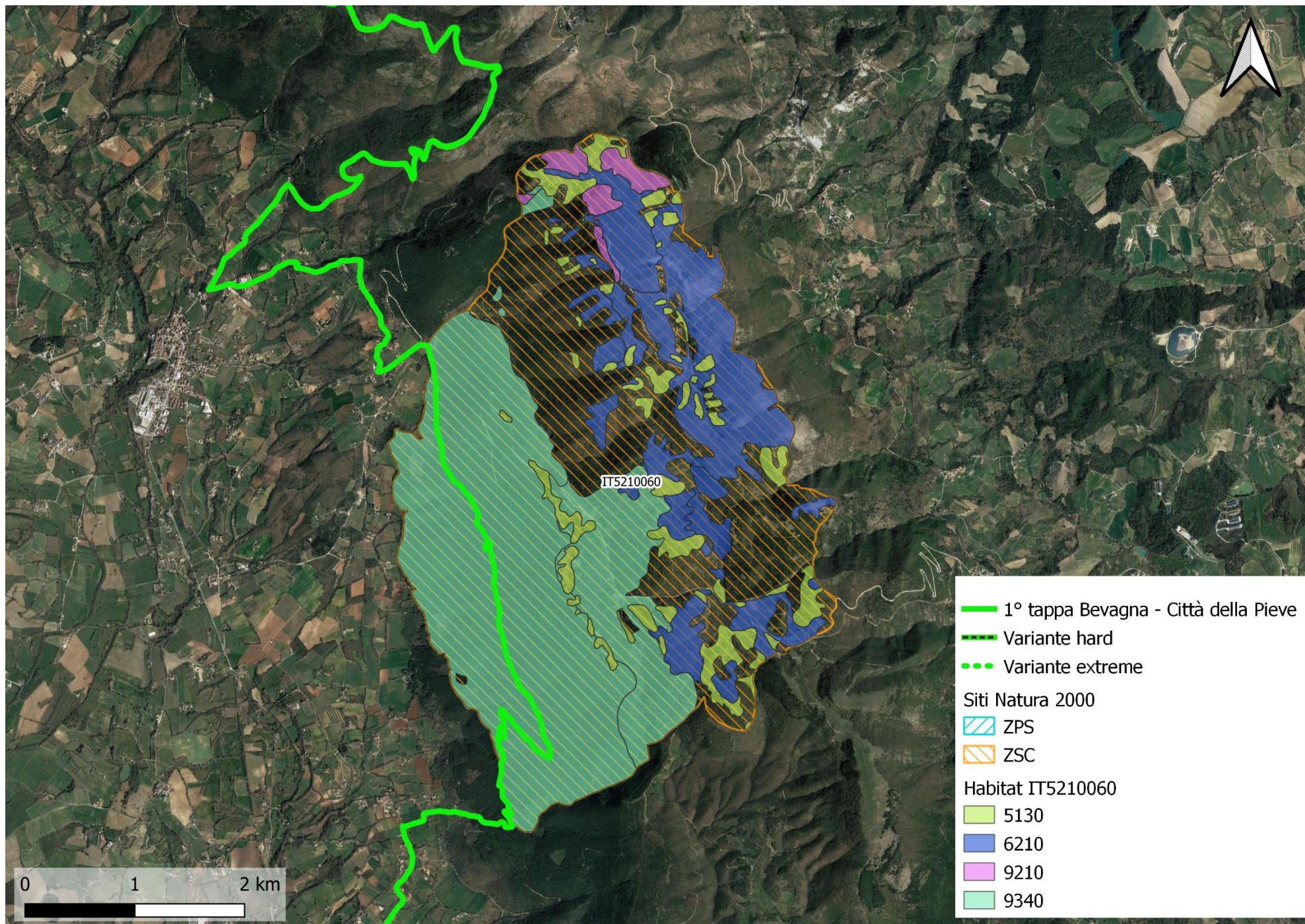


Figura 2: Tracciato su ZSC IT5210060 "Monte il Cerchio"



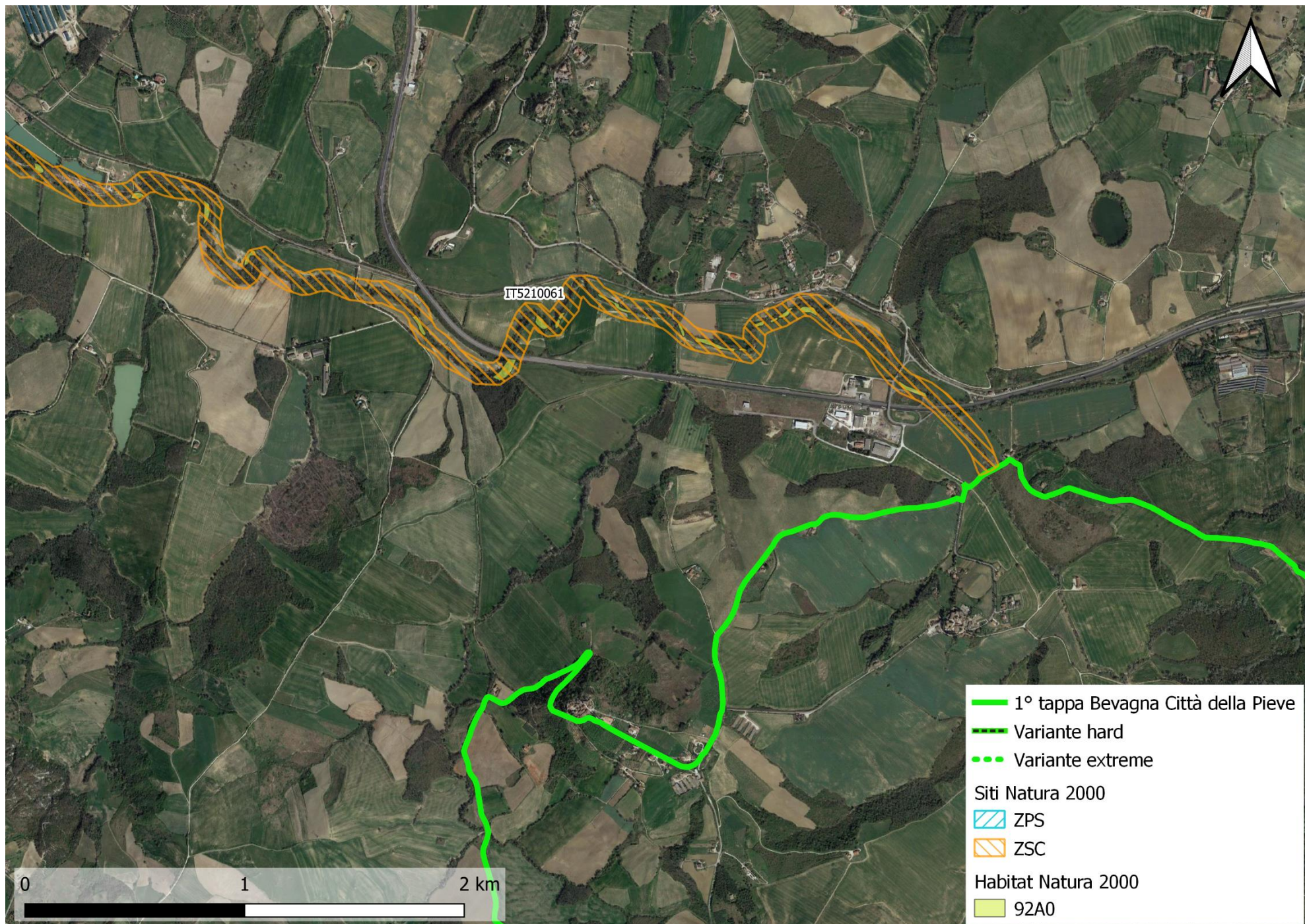


Figura 3: Tracciato su ZSC IT5210061 "Torrente Naia"



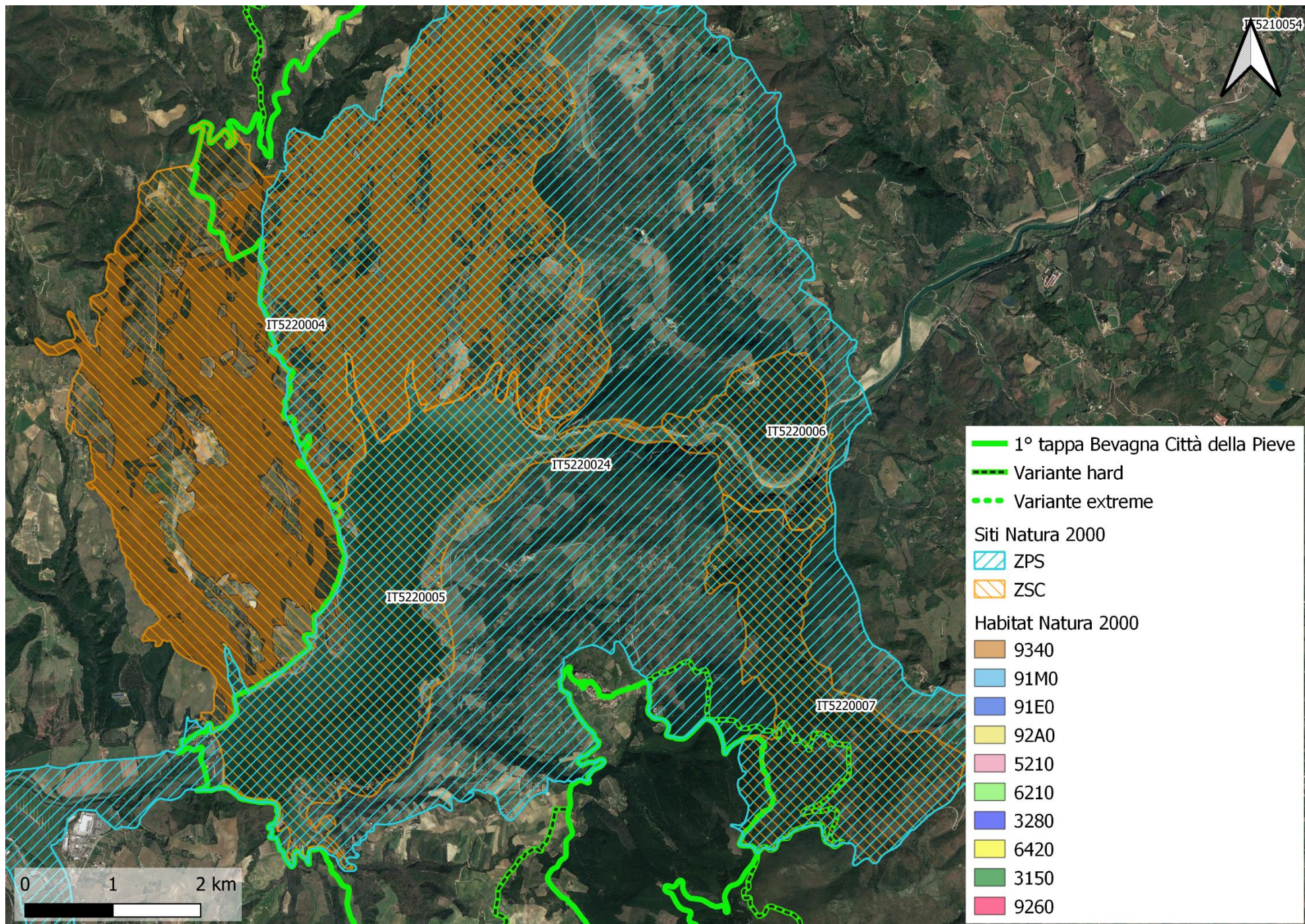


Figura 4: Tracciato su ZPS IT5220024 “Valle del Tevere Laghi Corbara - Alviano”, ZSC IT5220004 “Boschi di Prodo - Corbara”, ZSC IT5220005 “Lago di Corbara”, ZSC IT5220007 “Valle Pasquarella”



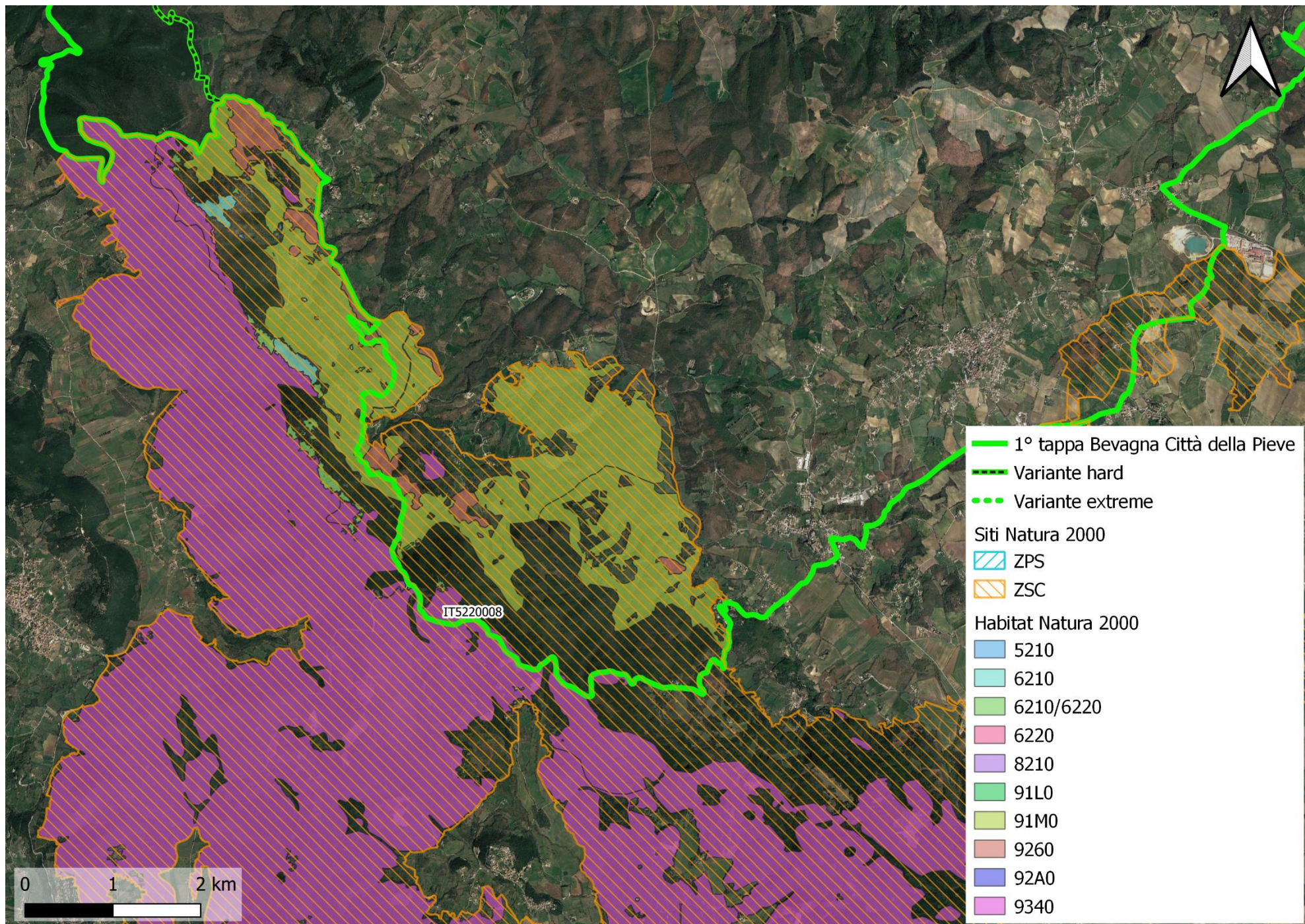


Figura 5: Tracciato su ZSC IT5220008 "Monti Amerini"



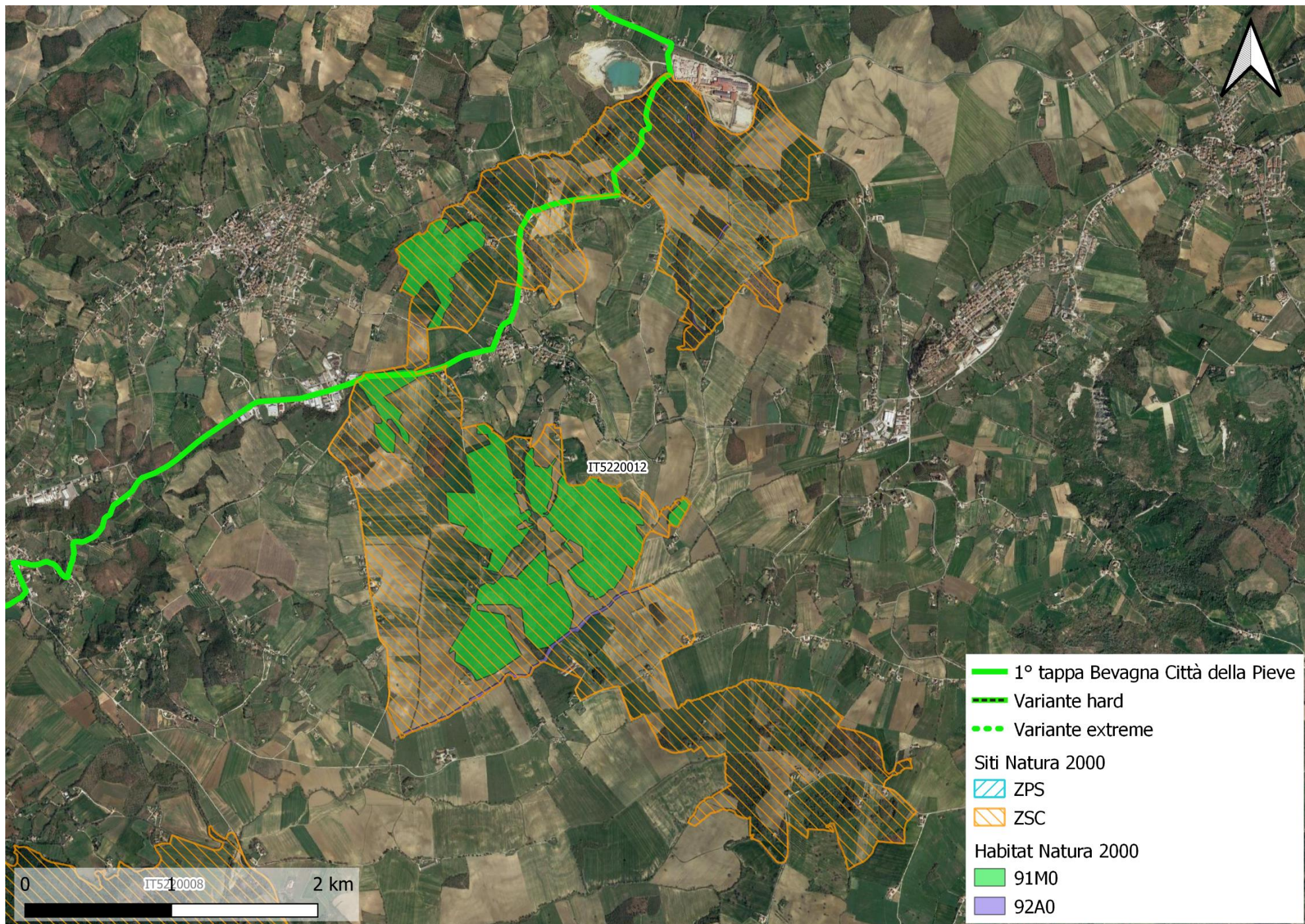


Figura 6: Tracciato su ZSC IT5220012 "Boschi di Farnetta - Foresta Fossile di Dunarobba"



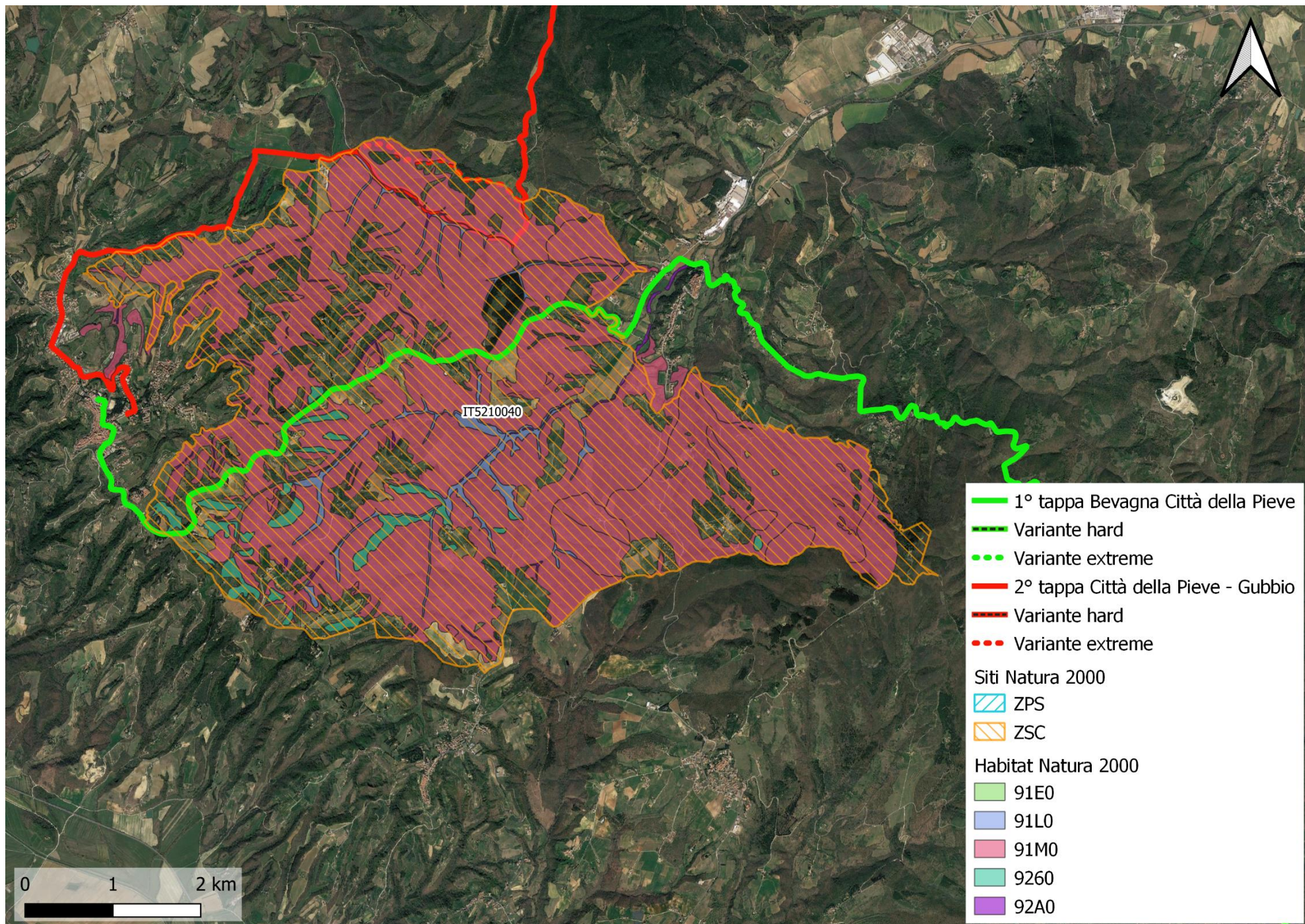


Figura 7: Tracciato su ZSC IT5210040 “Boschi dell’alta valle del Nestore”



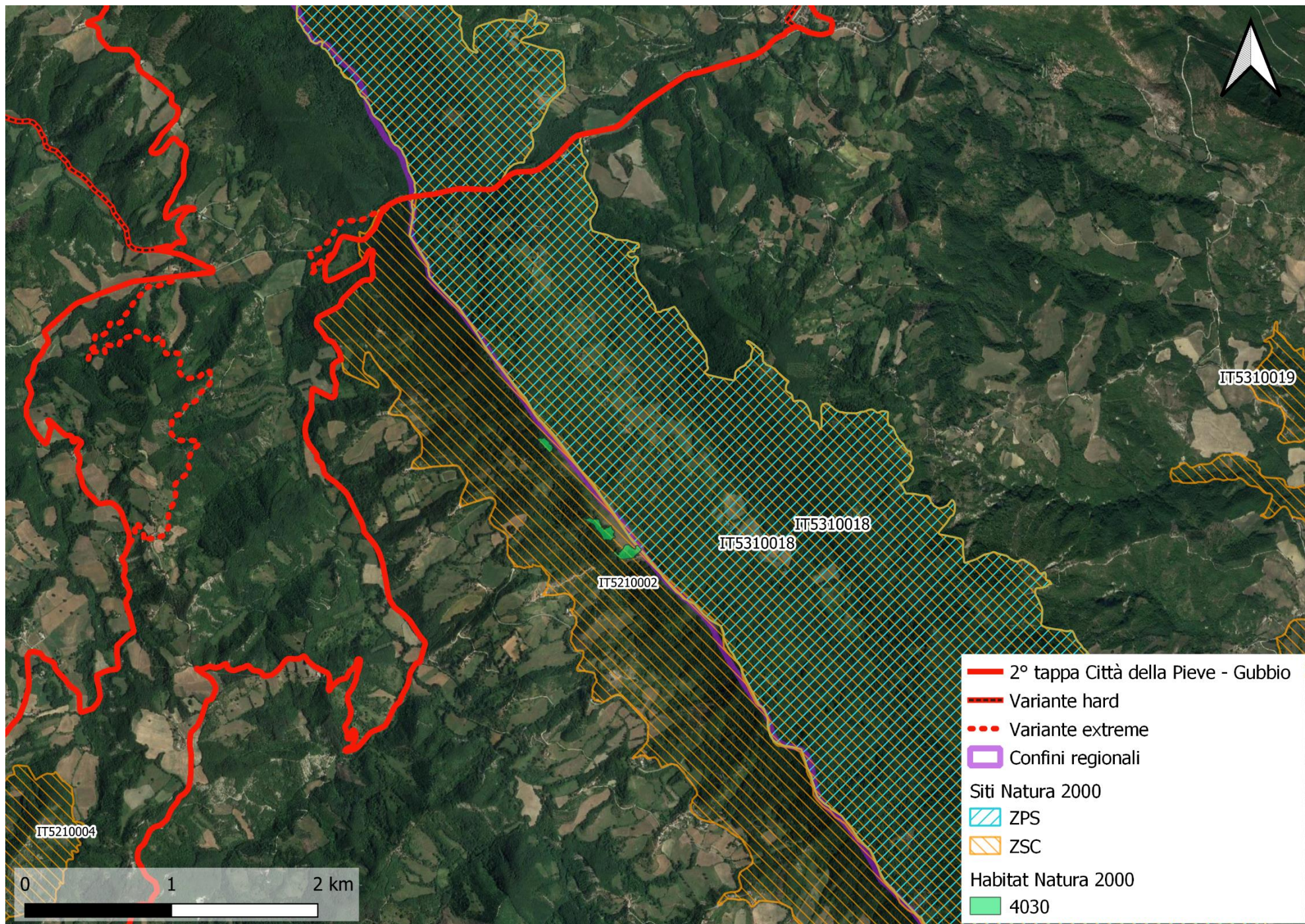


Figura 8: Tracciato su ZSC IT5210002 "Serre di Burano"



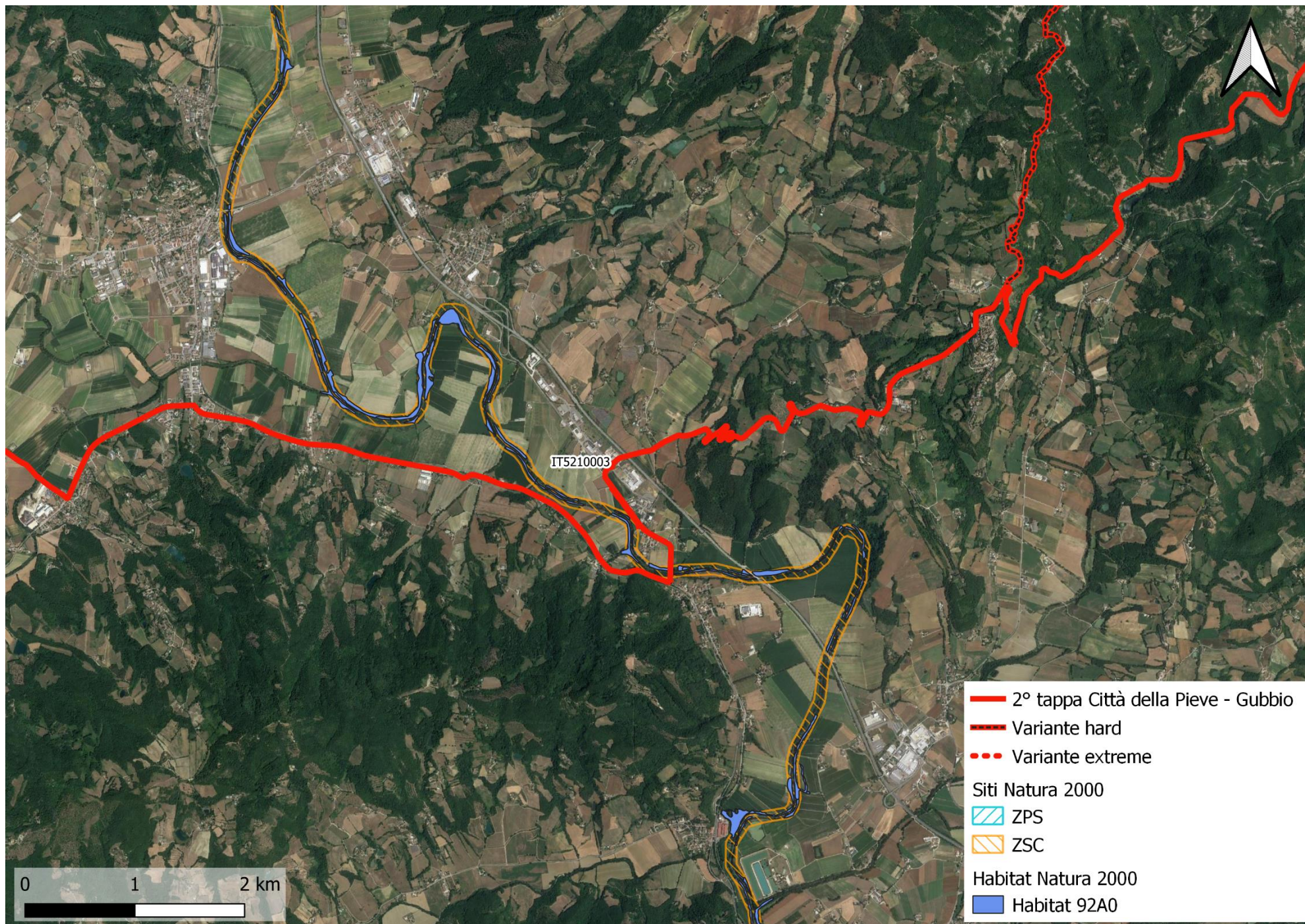


Figura 9: Tracciato su ZSC IT5210003 “Fiume Tevere tra San Giustino e Pierantonio”



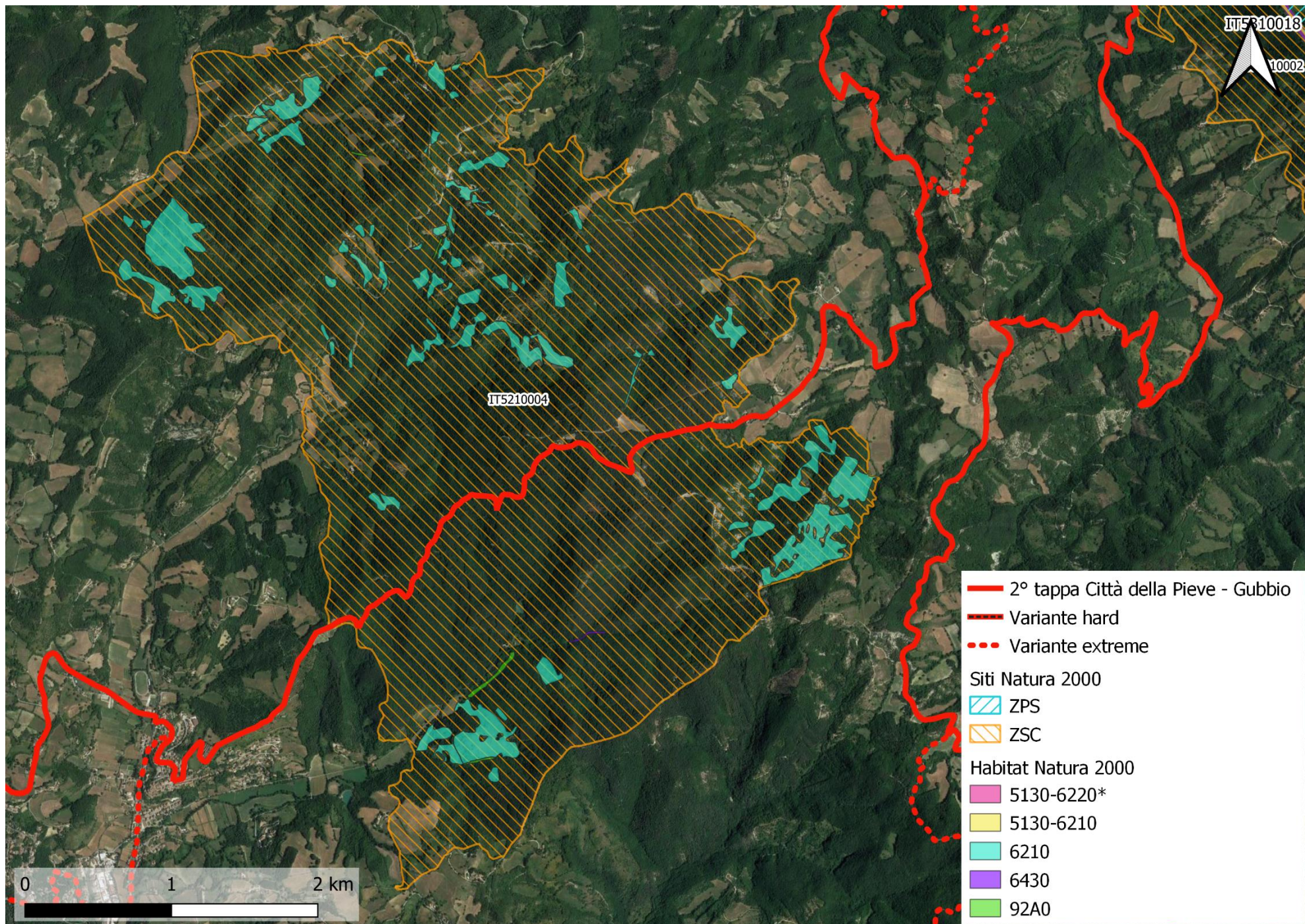


Figura 10: Tracciato su ZSC IT5210004 "Boschi di Pietralunga"



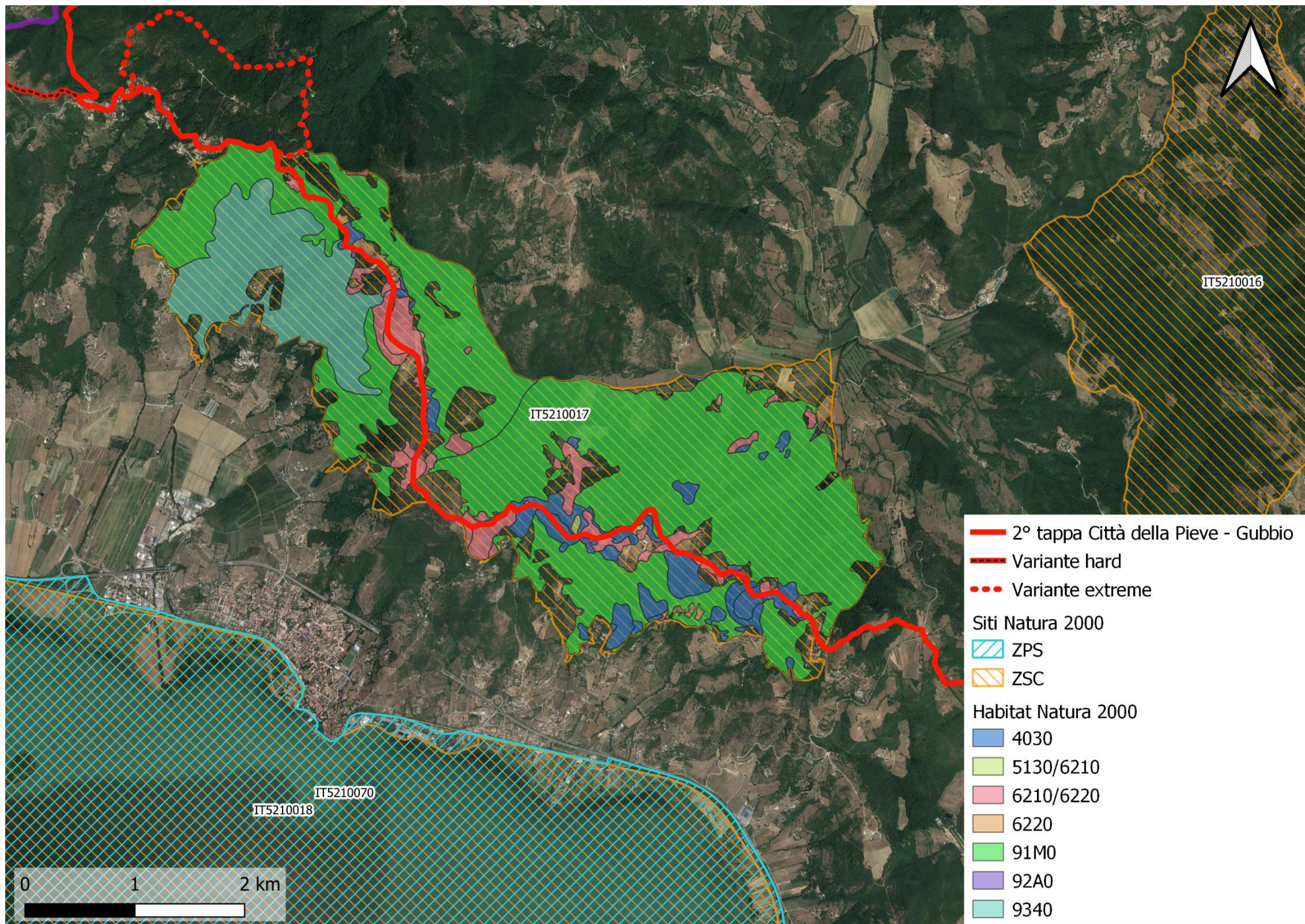


Figura 11: Tracciato su ZSC IT5210017 "Boschi di Pischiello - Torre Civitella"



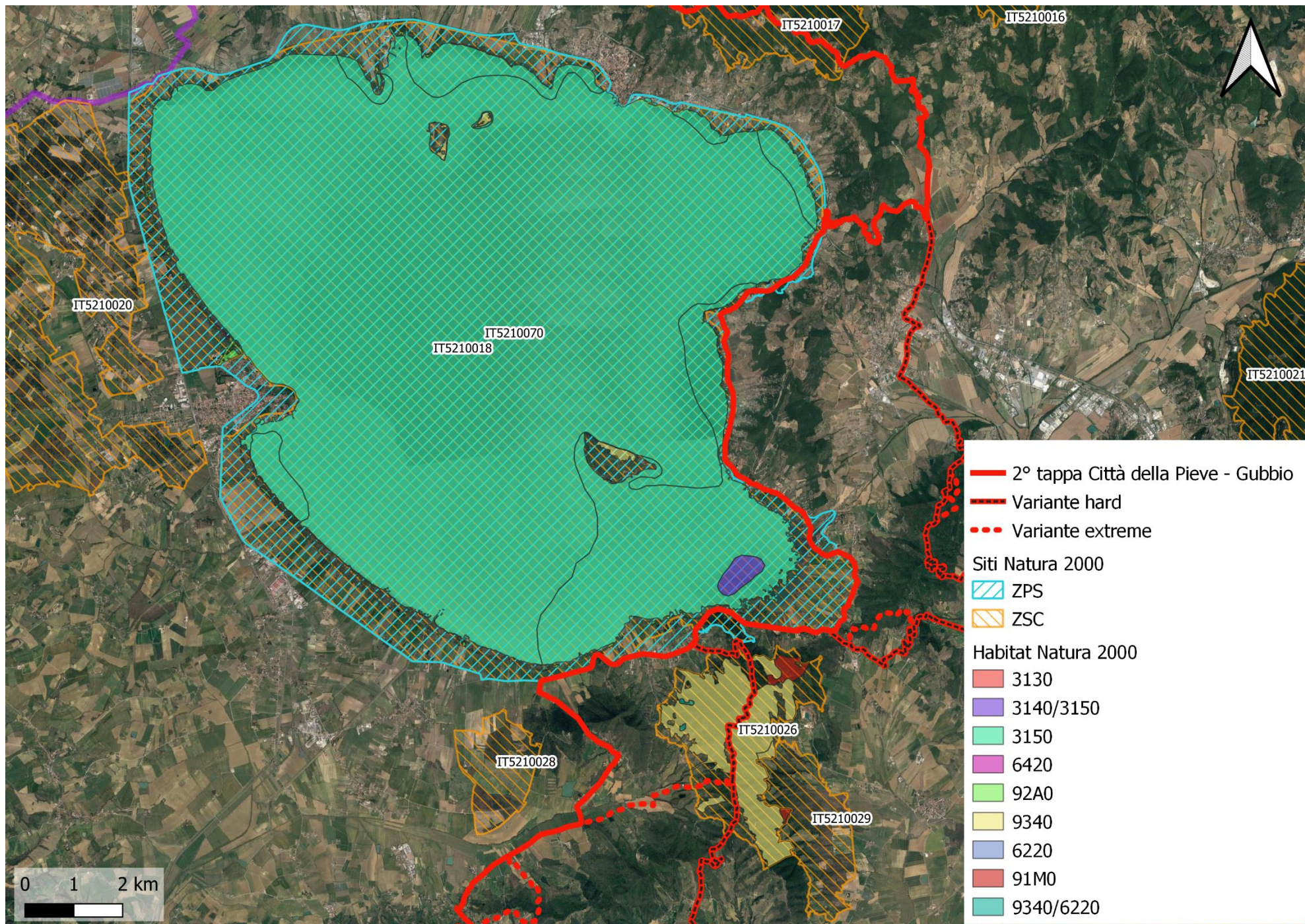


Figura 12: Tracciato su ZSC IT5210026 “Monti Marzolana - Montali” ZPS IT5210070 “Lago Trasimeno” ZSC IT5210018 “Lago Trasimeno”



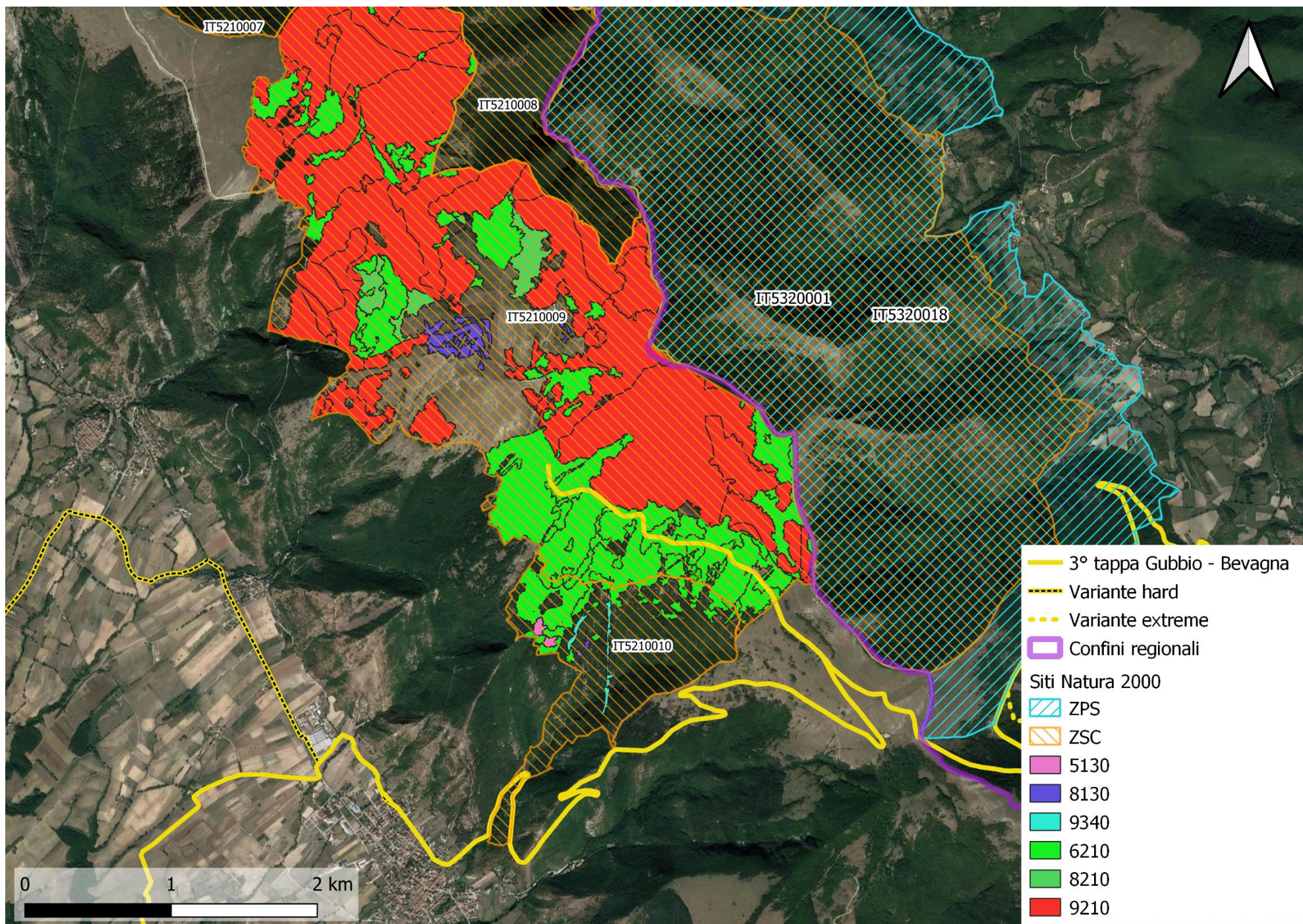


Figura 13: Tracciato su ZSC IT5210009 "Monte Cucco", ZSC IT5210010 "Le Gorghe"



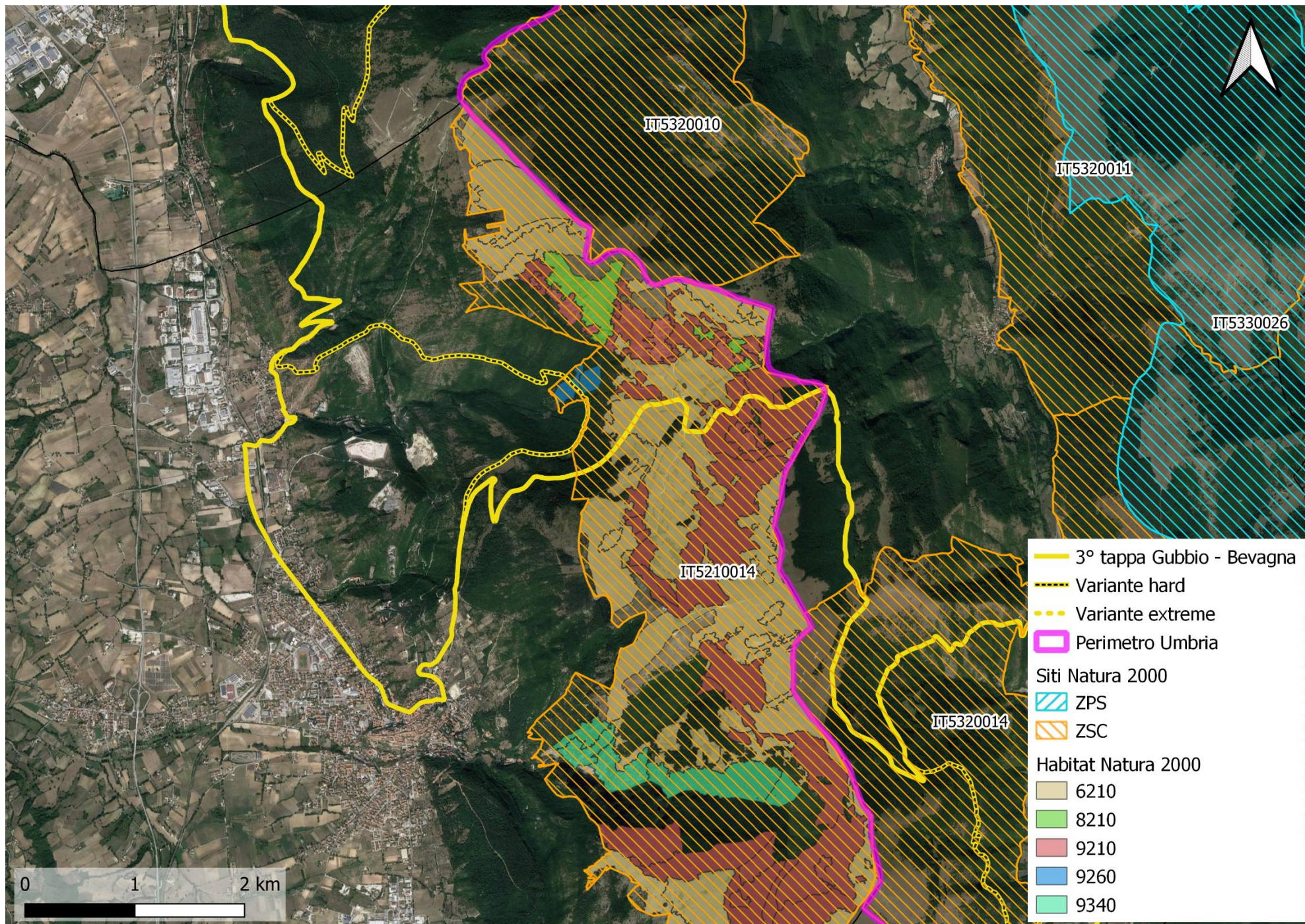


Figura 14: Tracciato su ZSC IT5210014 "Monti Maggio - Nero"



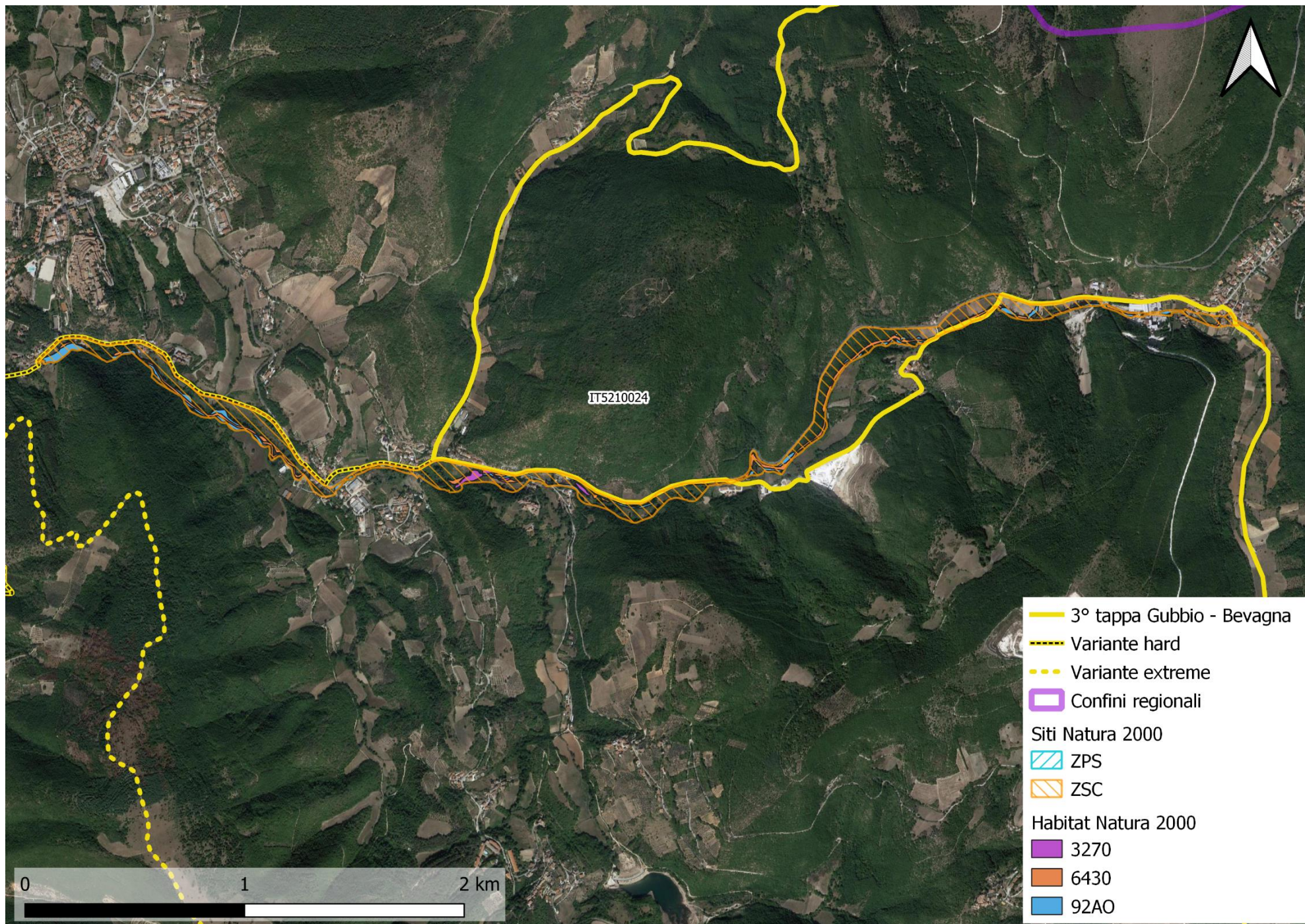


Figura 15: Tracciato su ZSC IT5210024 "Fiume Topino tra Bagnara e Nocera Umbra"



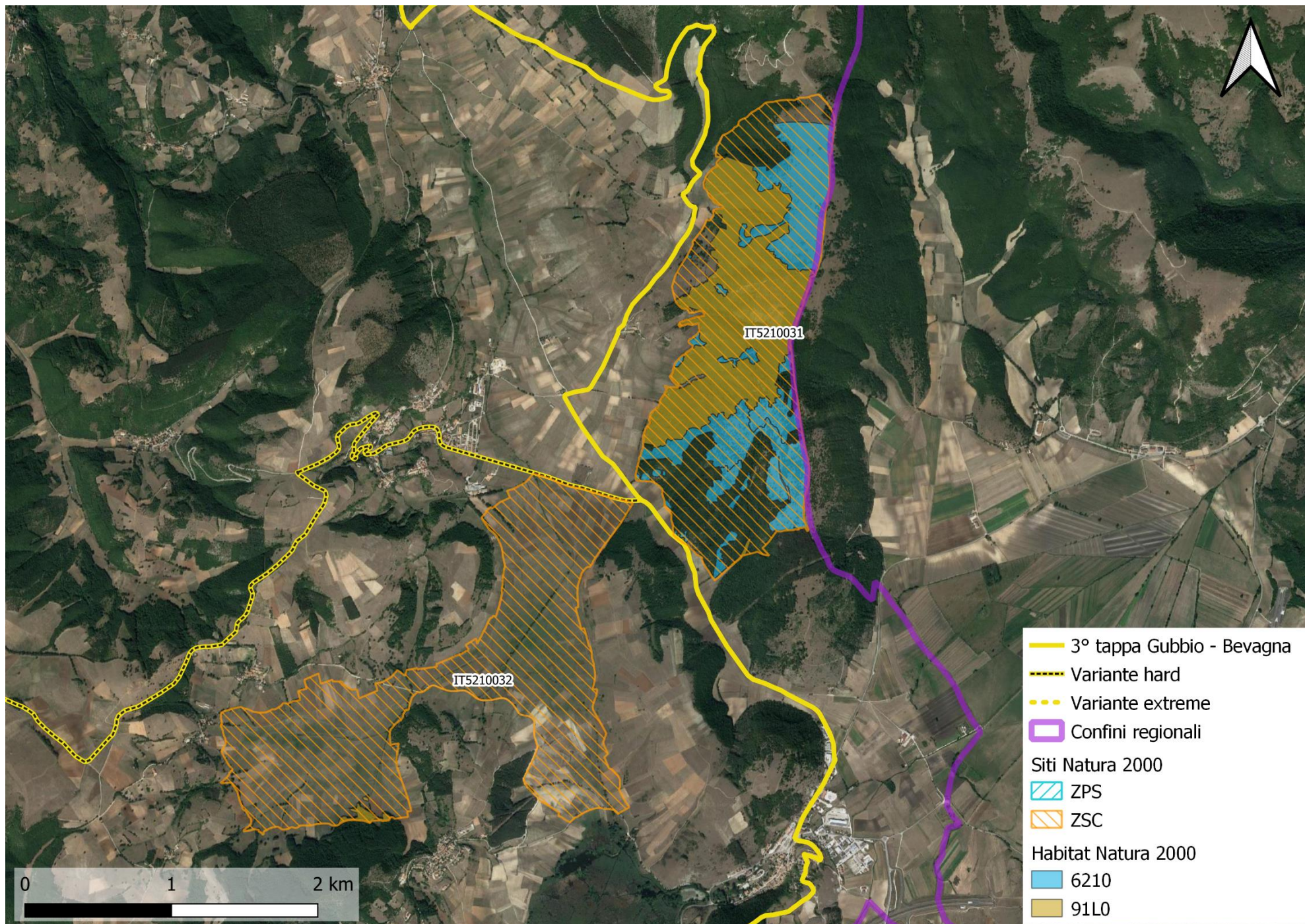


Figura 16: Tracciato su ZSC IT5210031 "Colfalcone" ZSC IT5210032 2Piani di Annifo - Arvello"



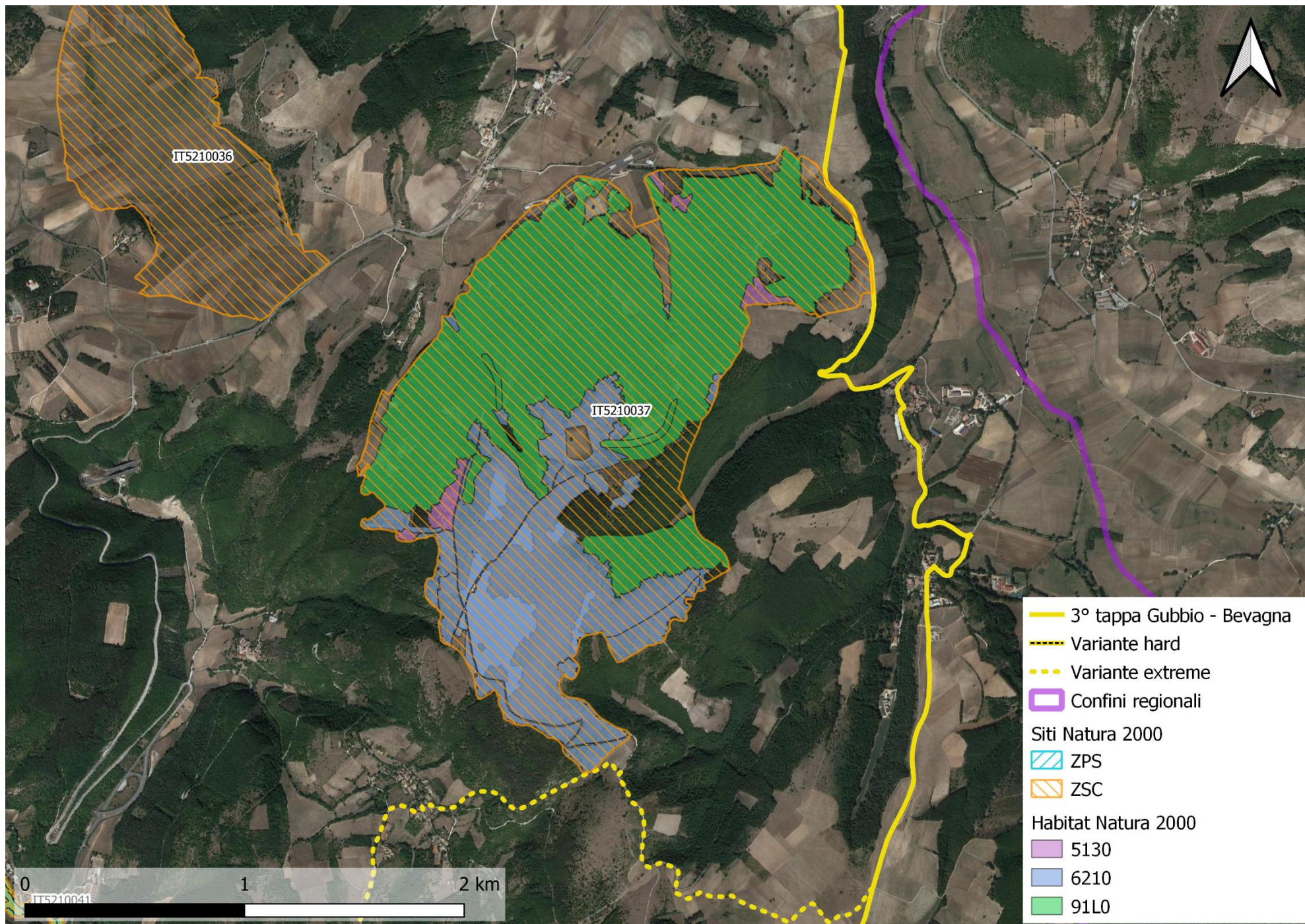


Figura 17: Tracciato su ZSC IT5210037 “Selva di Cupigliolo”



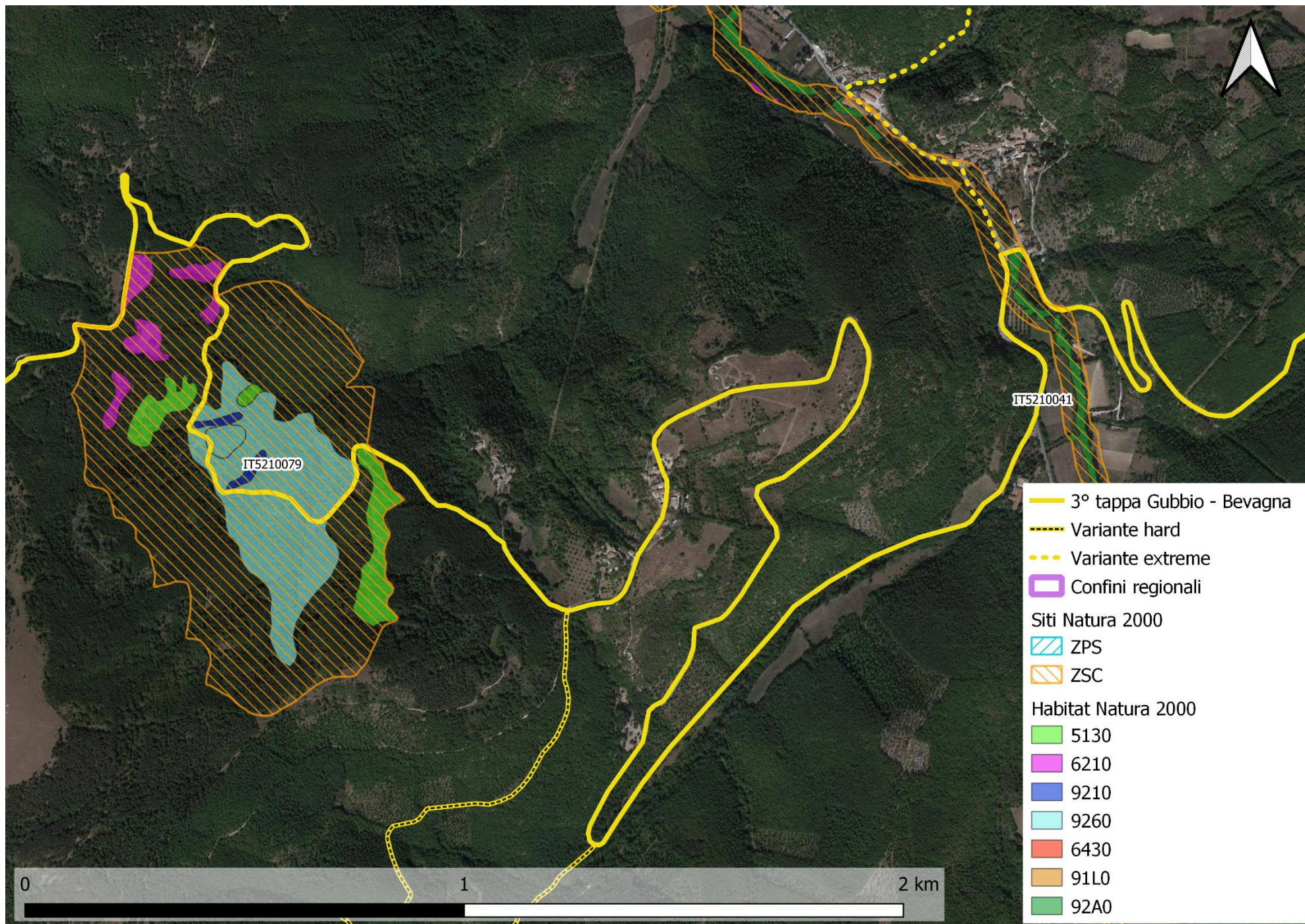


Figura 18: Tracciato su ZSC IT5210079 "Castagneti di Morro"



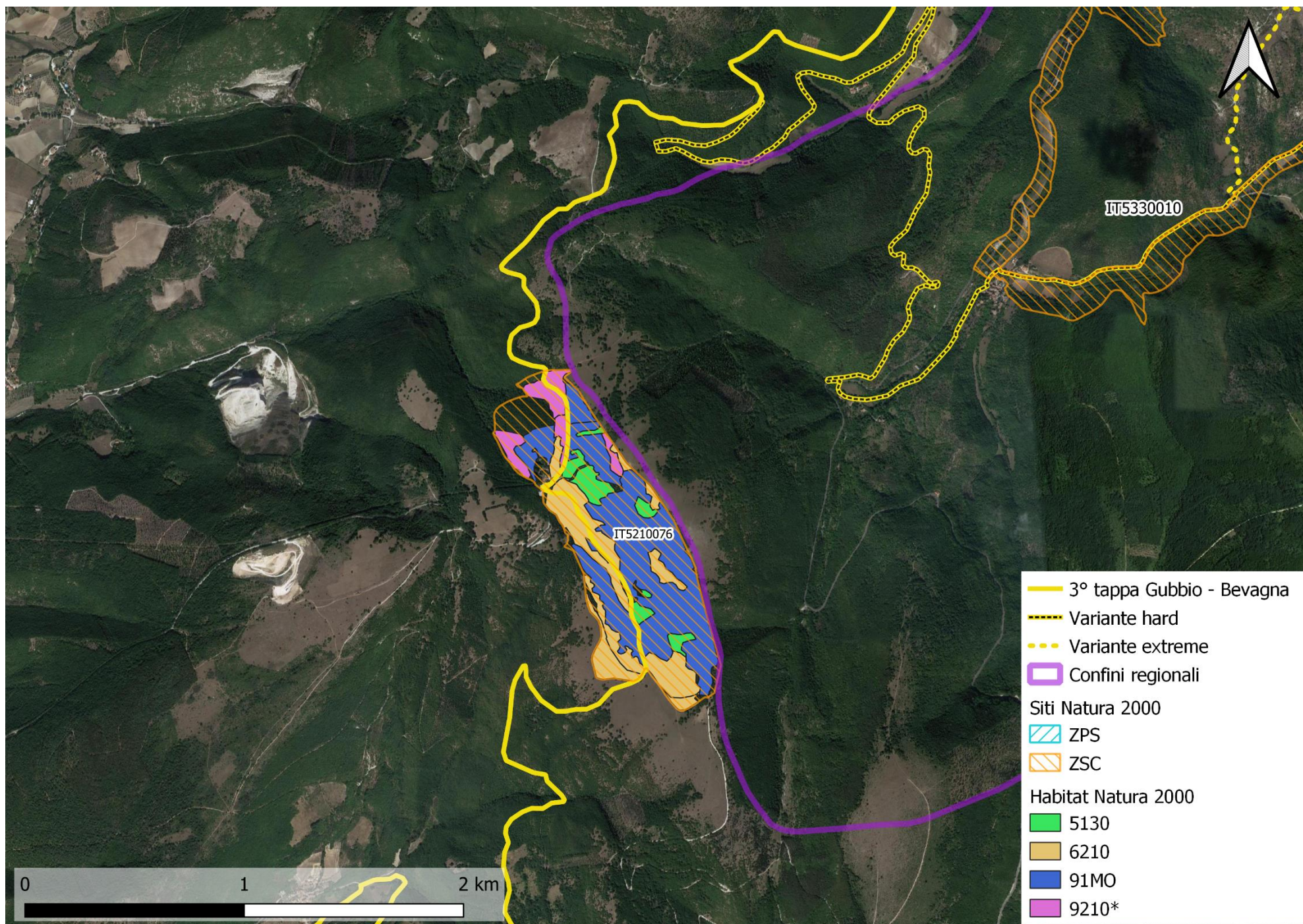


Figura 19: Tracciato su ZSC IT5210076 "Monte Alago"